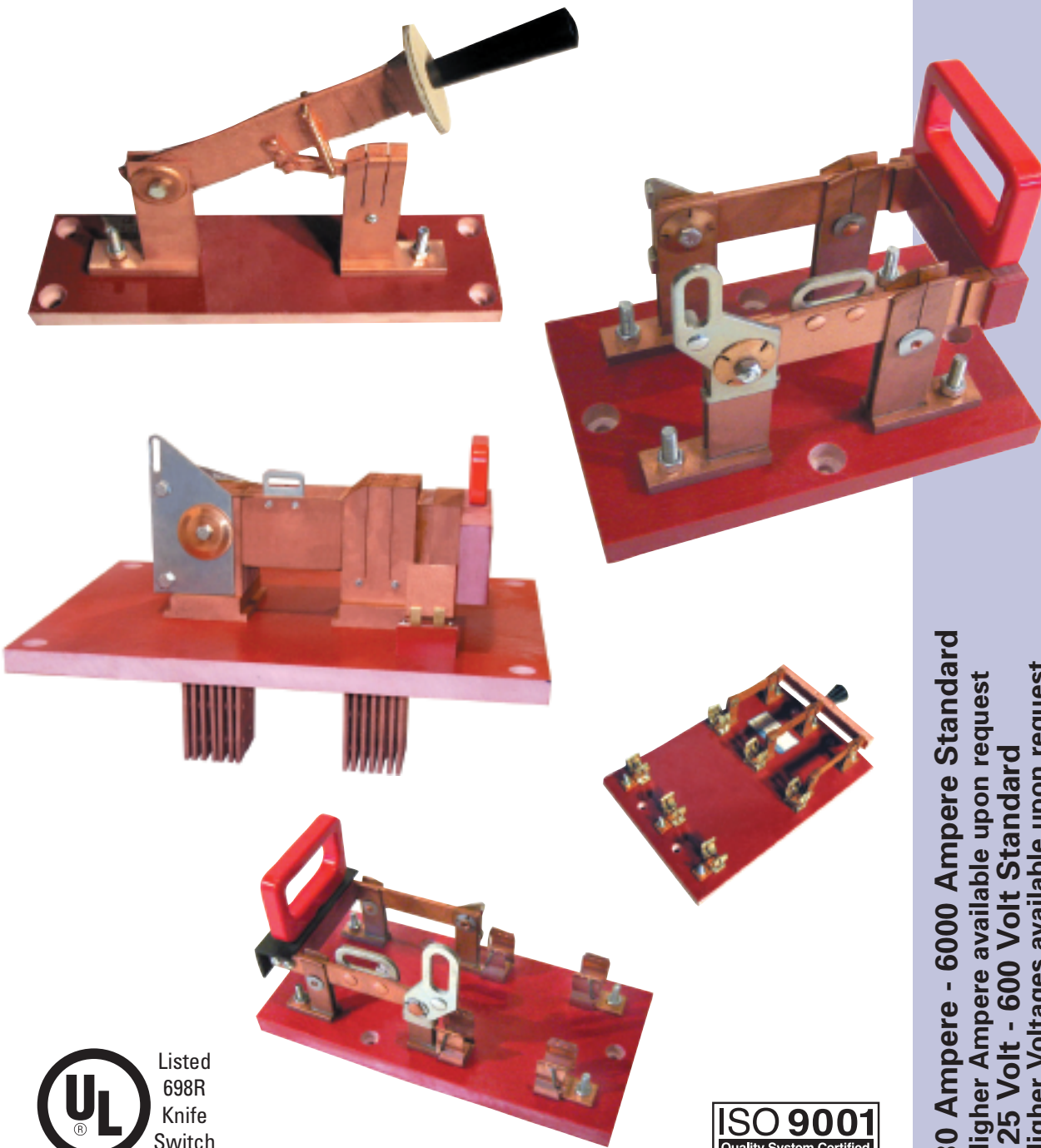




Knife Switch Product Catalog



Listed
698R
Knife
Switch

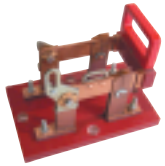


30 Ampere - 6000 Ampere Standard
Higher Ampere available upon request
125 Volt - 600 Volt Standard
Higher Voltages available upon request

Knife Switches



Knife Switch Product Catalog



SECTION A - Class 9850 - TYPE A - Front Connected Knife Switches



SECTION B - Class 9851 - TYPE D - Back Connected Knife Switches



SECTION C - Class 9852 - TYPE L - Back Connected Knife Switches



SECTION D - Class 9854 - TYPE B - Fuse Blocks



SECTION E - Dimensional Information



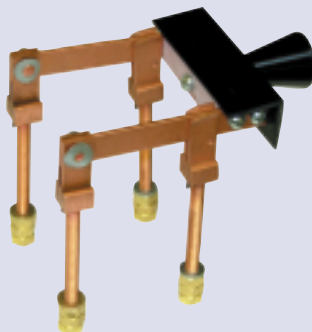
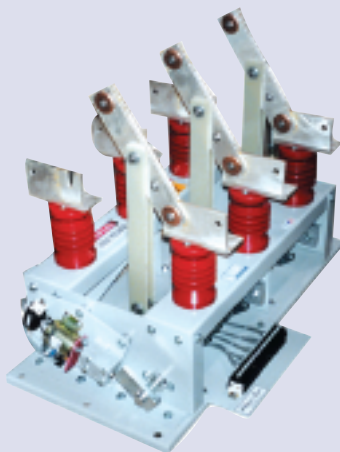
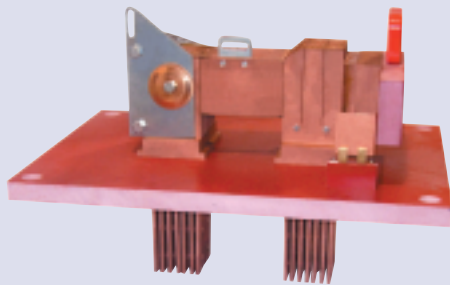
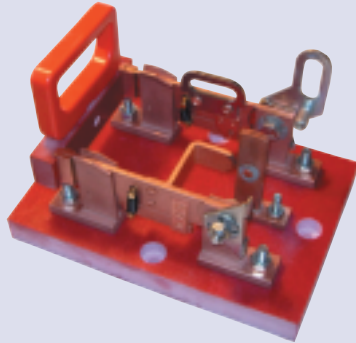
SECTION F - Maintenance and Installation



30 Ampere - 6000 Ampere Standard
Higher Ampere available upon request
125 Volt - 600 Volt Standard
Higher Voltages available upon request

Knife Switches

KNIFE SWITCH PRODUCT INTRODUCTION



Filnor's Knife Switch product line was purchased from the Square D Company in 1974, and began production of switches in June of that year. The switch line was formerly the Barkelew Electric Company.

We have over 700 standard switches listed in our catalog. The electrical ratings on the switches range from 30 Amperes at 125 Volts AC/DC to 6000 Amperes at 600 Volts AC/DC. Construction styles are a front-connected (steel panel mounting) or back-connected (insulated panel mounting). All of these switches carry the Underwriters Laboratories Listing.

In conjunction with the standard switch line, we also build many special switch arrangements per our customers' specification. Our special switch units range in current size from 30 Amperes up through 20,000 Amperes, and Voltages up to 38,000 Volts.

Filnor is a switch supplier to a number of different industries such as transportation, utility, telecommunications, and heavy industry just to name a few. Our industry coverage lies from the large steel producers to the small marine diving companies.

With our many years of experience building standard and special switch units, Filnor is highly capable of fulfilling your switch needs.





SECTION A - Class 9850 - TYPE A - Front Connected Knife Switches 3

Introduction to Type A 4
30 Ampere, 125 Volt 5
Single-Throw, Not-Fusible 6
Double-Throw, Not-Fusible 7
Single-Throw, Fusible 8
Double-Throw, Fusible 9
Field Discharge, Polarity Reversing 10
Auxiliary Switches & Padlocking Features Options 11
Handles Options 12

SECTION B - Class 9851 - TYPE D - Back Connected Knife Switches 13

Introduction to Type A 14
30 Ampere, 125 Volt 15
Single-Throw, Not-Fusible 16
Double-Throw, Not-Fusible 17
Single-Throw, Fusible 18
Double-Throw, Fusible 19
Field Discharge, Polarity Reversing 20
Single or Double-Throw, Not-Fusible Dimensions 21 - 22
Single or Double-Throw, Field Discharge, Not-Fusible Drawing & Dimensions 23
Single-Throw, Fusible at Bottom Drawing 24
Single-Throw, Fusible at Bottom Dimensions 25

SECTION C - Class 9852 - TYPE L - Back Connected Knife Switches 26

Introduction to Type L 27
Single-Throw, Not-Fusible 28
Double-Throw, Not-Fusible 29
Polarity Reversing 30
Single or Double-Throw, Not-Fusible Drawing & Dimensions 31 - 32

SECTION D - Class 9854 - TYPE B - Fuse Blocks 33

Fuse Blocks & Fuse Holders (For National Electric Code Fuses) 34
800-6000 Ampere Fuse Blocks (For Class L Fuses) 35
Terminal Pad Dimensions (For 800-6000 Ampere Fuse Blocks)..... 36
Rectifier Fuse Blocks 37

SECTION E - Dimensional Information 38

Drawings & Dimensions 39 - 68

SECTION F - Maintenance and Installation 69

Maintenance Instructions 69
Instructions for Installing Unmounted Knife Switches on Panels 70

Class 9851 Back Connected Knife Switches With Stud & Nut Terminations Type D

SECTION B

ORDERING INFORMATION REQUIRED

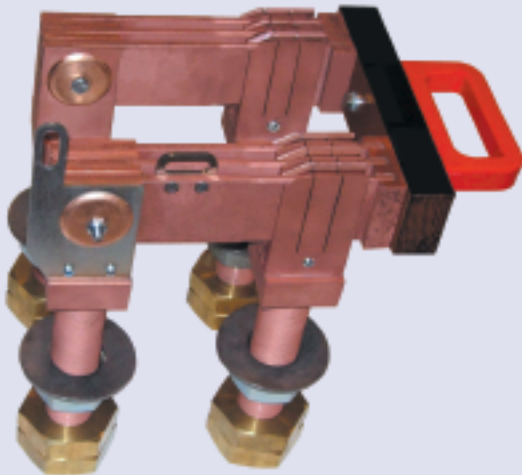
1. Class, Type Number, and Part Letters (if any) of Switch.
2. Voltage and Ampere Rating.
3. If special features other than listed in Section D7 of the Price List are desired, order as Class 9851 similar to Part # _____, except _____ (clearly describe special feature).

Receive Quotes Online

TYPE D BACK-CONNECTED KNIFE SWITCHES

D-8026 P2GE

600 Ampere, Two Pole, Single-Throw Switch, With Padlock Feature



1200 Ampere Fuse Holder



400 Ampere Blade Clip

30 Ampere Back Connected Fuse Clip

SPECIAL SWITCHES

Special designs are available. We may already have a design for what you require, if not our engineering department will investigate and inform you if we can build it. Please contact Filnor directly for your special switch requirements.

SPARE PARTS

Spare parts are available for all knife switches and fuse clips. Accessories are also available for adding to knife switches.

Construction

All current carrying parts of Type D knife switches are milled and provided with a corrosion resistant finish. Designed for back connection, these switches are furnished without bases for mounting on insulating panels of customers' switchboards. Switches rated at 1200 Amperes and larger are shipped on throw-away bases as standard. Prices will be quoted upon request for switches rated 800 Amperes and smaller, mounted on throw-away bases.

Connections are made to Type D switches by means of round studs of hard-drawn copper. Switches rated 600 Amperes and smaller are furnished with studs to fit boards from 1/2" to 2" thick. 800 Amperes and larger have studs to fit boards 1" to 2" thick.

Fusible hinge switches have steel studs and nuts that fit and board 1/2" to 2" thick. The steel studs or screws are only for mounted purposes. No electrical connections are made to fusible hinges.

Type D Field Discharge Switches

Field discharge switches are used to overcome the high inductive current caused by suddenly opening a generator field. When opening the generator circuit, the field discharge switch closes the field across a resistor allowing the inductive discharge to die out gradually, which might otherwise result in a rupture of field insulation.

Upon opening these two-pole switches, the discharge blade, which is an offset extension of one of the main blades, makes contact with a high clip. The high clip, which is connected to the resistor, is located between the hinges of the two blades.

Another feature of the switch is each pole is equipped with quick-break blades. The discharge blade and the quick break blades combine to provide a make before break operation. Upon opening the switch, the resistance current is made before the line-to-field circuit is broken, limiting the field discharge voltage. When closing the switch, the discharge blade breaks the resistance current before the main blades make contact.

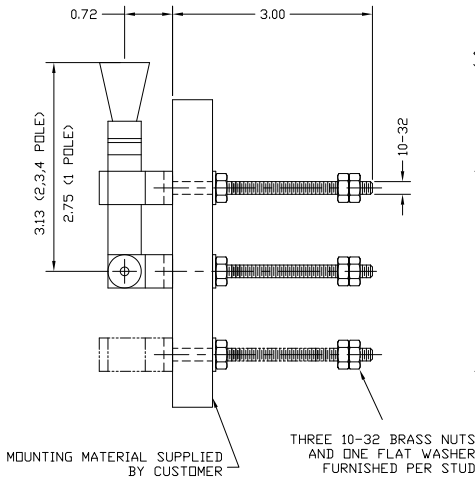
Available 60 Ampere through 200 Ampere. Larger sizes available on special orders.

Ratings

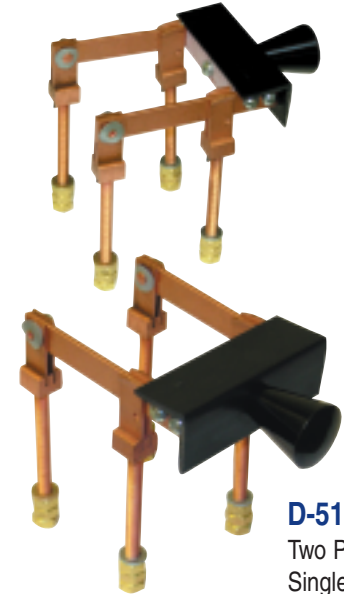
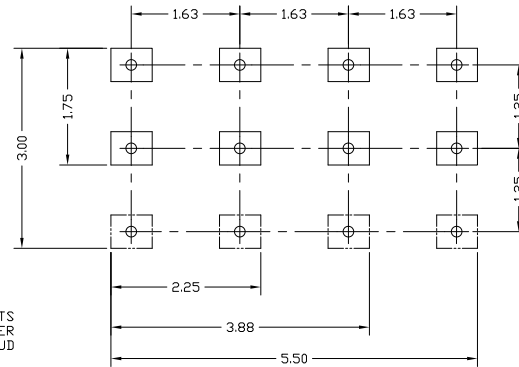
Ampere ratings of Type D, not-fusible knife switches are based on a temperature rise of not more than 30 degrees C above an ambient temperature of not more than 40 degrees C when mounted in the open air.

Enclosed ratings are based on the switches being mounted in enclosures with adequate ventilation and with bus or cable of appropriate size. Fusible switches are not to be loaded continuously at more than 80% of the fuse rating.

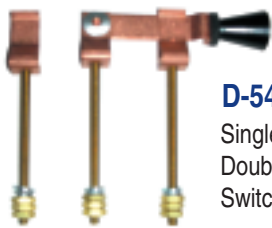
TYPE D BACK-CONNECTED KNIFE SWITCHES



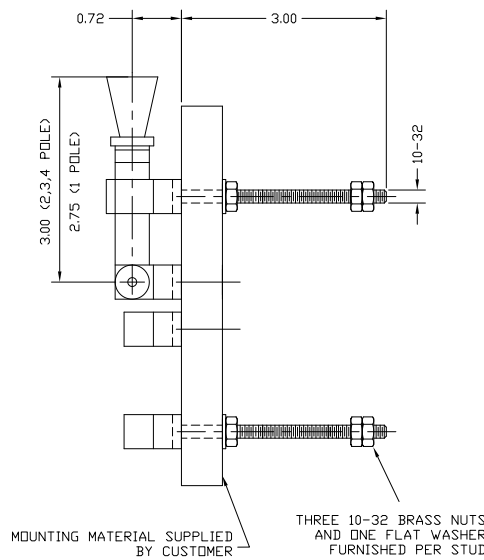
SINGLE & DOUBLE THROW



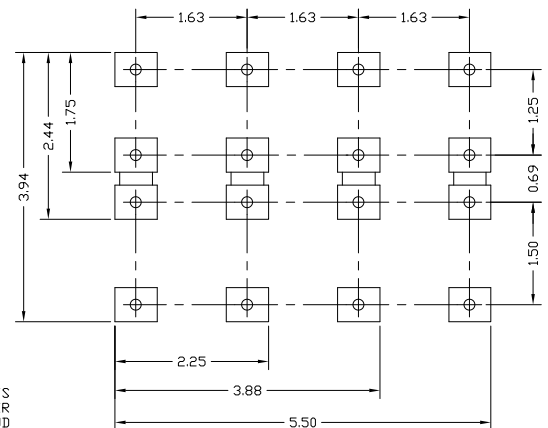
D-51S
Two Pole,
Single-Throw
Switch



D-54D
Single Pole,
Double-Throw
Switch



FUSIBLE

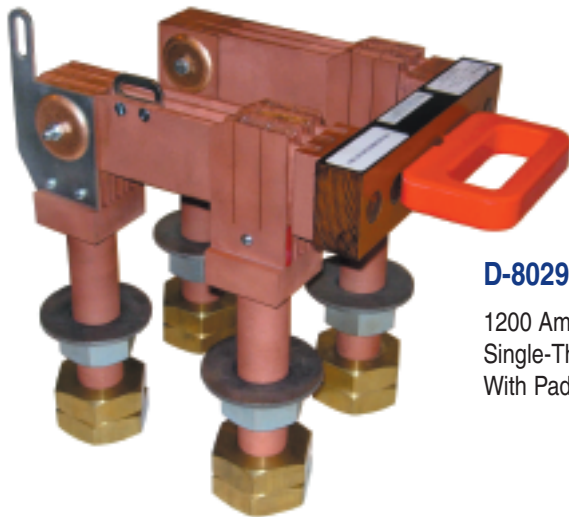


Poles	Single Throw	Double Throw	Fusible
	Cat No	Cat No	Cat No
1	D-50S	D-54D	D-58F
2	D-51S	D-55D	D-59F
3	D-52S	D-56D	D-60F
4	D-53S	D-57D	D-61F

30 Ampere 125 Volt Disconnects Back Connected.
For additional dimensional information, please contact the factory.

Receive Quotes Online

TYPE D BACK-CONNECTED KNIFE SWITCHES Single-Throw, Not Fusible



D-8029 P2G

1200 Ampere, Two-Pole,
Single-Throw Switch,
With Padlock Feature

Open knife switches are used as disconnect switches mounted on switchboards, distribution and control panel boards. Extensive use of knife switches are found in the heavy industries and laboratories, for control and test panels, where visible disconnects are required.

Type D, single-throw, not-fusible knife switches have a corrosion resistant finish and low hinges and clips. Designed for back-connection, these switches are provided without bases for mounting on insulating panels of customers' switchboards.

Type D switches can also be furnished mounted on insulating panels. Prices will be quoted upon receipt of complete information including panel size.

SINGLE-THROW

Ampere Rating	One Pole			Two Pole			Three Pole			Four Pole		
	Type	Weight	Drawing	Type	Weight	Drawing	Type	Weight	Drawing	Type	Weight	Drawing
250 VOLT DC & 480 VOLT AC												
*30	D-8010	1/2	Refer to Section E Figure 10	D-8020	3/4	Refer to Section E Figure 10	D-8030	1	Refer to Section E Figure 10	D-8040	1 1/2	Refer to Section E Figure 10
60	D-8012	1		D-8022	1 1/2		D-8032	2 1/4		D-8042	2 3/4	
100	D-8013	1 1/2		D-8023	3		D-8033	4 1/4		D-8043	6	
200	D-8014	2 1/2		D-8024	5		D-8034	8		D-8044	12	
300	D-8006	3 1/2		D-8007	8		D-8008	12		D-8009	15	
400	D-8015	5		D-8025	13		D-8035	19		D-8045	26	
600	D-8016	8		D-8026	19		D-8036	29		D-8046	38	
800	D-8017	10		D-8027	25		D-8037	36		D-8047	48	
1200	D-8019	15		D-8029	36		D-8039	50		D-8049	67	
1600	D-8051	22		D-8061	43		D-8071	50		D-8081	84	
2000	D-8052	35		D-8062	67		D-8072	92		D-8082	123	
600 VOLT DC & AC												
30	D-8711	1 1/4	Refer to Section E Figure 10	D-8721	2	Refer to Section E Figure 10	D-8731	3	Refer to Section E Figure 10	D-8741	4	Refer to Section E Figure 10
60	D-8712	1 1/2		D-8722	2 1/4		D-8732	4		D-8742	5	
100	D-8713	1 3/4		D-8723	2 3/4		D-8733	6		D-8743	8	
200	D-8714	3		D-8724	6		D-8734	10		D-8744	15	
300	D-8710	4		D-8720	10		D-8730	15		D-8740	20	
400	D-8715	6		D-8725	16		D-8735	25		D-8745	32	
600	D-8716	9		D-8726	23		D-8736	35		D-8746	50	
800	D-8717	11		D-8727	27		D-8737	39		D-8747	52	
1200	D-8719	17		D-8729	40		D-8739	56		D-8749	75	

* For 250 Volt DC & AC
For 30 Ampere 480 Volt AC use 60 Ampere switch.

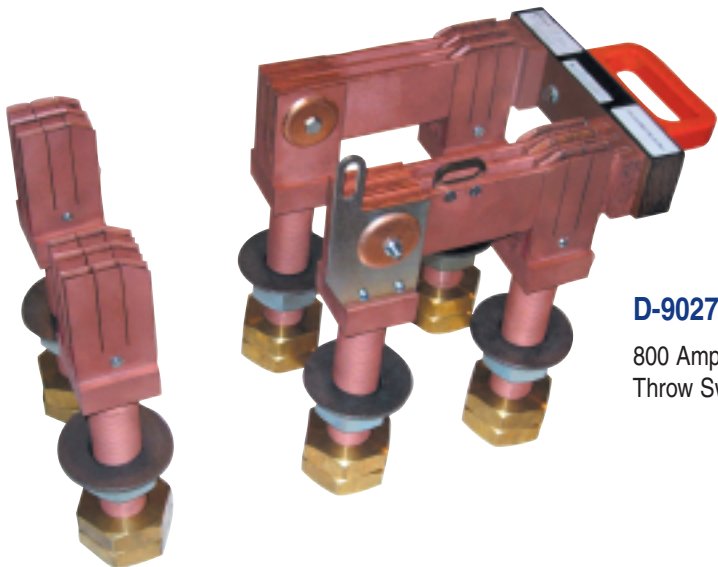
Prices for 600 Volt switches include quick break blades as required by U.L. on all switches over 100 Amperes.

FOR MODIFICATIONS AND SPECIAL FEATURES REFER TO SECTION D-7 OF PRICE LIST

Receive Quotes Online

Filnor, Inc. • 227 N. Freedom • P.O. Box 2328 • Alliance, Ohio 44601 • 330.821.7667 • f-330.829.3175
www.filnor.com • sales@filnor.com • info@filnor.com

TYPE D BACK-CONNECTED, KNIFE SWITCHES Double-Throw, Not Fusible



Type D double-throw not-fusible knife switches are similar in construction to the single-throw version. For applications where it is necessary to manually transfer between two power supplies or two loads, the double-throw switches are particularly well suited.

D-9027 P2

800 Ampere, Two-Pole, Double-Throw Switch, With Padlock Feature

DOUBLE-THROW

Ampere Rating	One Pole			Two Pole			Three Pole			Four Pole		
	Type	Weight	Drawing	Type	Weight	Drawing	Type	Weight	Drawing	Type	Weight	Drawing
250 VOLT DC & 480 VOLT AC												
*30	D-9010	1/2	Refer to Section E Figure 20	D-9020	1	Refer to Section E Figure 20	D-9030	1 1/2	Refer to Section E Figure 20	D-9040	2	Refer to Section E Figure 20
60	D-9012	1 1/2		D-9022	2		D-9032	2 3/4		D-9042	3 1/2	
100	D-9013	2		D-9023	4		D-9033	5 1/2		D-9043	8	
200	D-9014	4		D-9024	7		D-9034	10		D-9044	15	
300	D-9006	5		D-9007	11		D-9008	15		D-9009	20	
400	D-9015	7		D-9025	17		D-9035	24		D-9045	35	
600	D-9016	10		D-9026	27		D-9036	36		D-9046	52	
800	D-9017	14		D-9027	35		D-9037	50		D-9047	68	
1200	D-9019	23		D-9029	63		D-9039	78		D-9049	95	
1600	D-9051	34		D-9061	80		D-9071	96		D-9081	120	
2000	D-9052	53	D-9062	110	D-9072	140	D-9082	170				
600 VOLT DC & AC												
30	D-9711	1 3/4	Refer to Section E Figure 20	D-9721	3	Refer to Section E Figure 20	D-9731	4	Refer to Section E Figure 20	D-9741	5 1/2	Refer to Section E Figure 20
60	D-9712	2		D-9722	3 1/2		D-9732	5 1/2		D-9742	7	
100	D-9713	2 1/2		D-9723	5		D-9733	10		D-9743	12	
200	D-9714	4 1/2		D-9724	9		D-9734	16		D-9744	22	
300	D-9710	6		D-9720	14		D-9730	26		D-9740	35	
400	D-9715	8		D-9725	21		D-9735	38		D-9745	50	
600	D-9716	12		D-9726	32		D-9736	50		D-9746	65	
800	D-9717	15		D-9727	37		D-9737	53		D-9747	72	
1200	D-9719	25		D-9729	67		D-9739	84		D-9749	103	

* For 250 Volt DC & AC
For 30 Ampere 480 Volt AC use 60 Ampere switch.

Prices for 600 Volt Switches include quick break blades as required by U.L. on all switches over 100 Amperes.

FOR MODIFICATIONS AND SPECIAL FEATURES REFER TO SECTION D-7 OF PRICE LIST

Receive Quotes Online

Filnor, Inc. • 227 N. Freedom • P.O. Box 2328 • Alliance, Ohio 44601 • 330.821.7667 • f-330.829.3175
www.filnor.com • sales@filnor.com • info@filnor.com

TYPE D BACK-CONNECTED KNIFE SWITCHES Single-Throw, Fusible



D-8122

60 Ampere, Two-Pole,
Single-Throw Fusible Switch

Fusible Type D knife switches are arranged with fuse holders which will accept standard National Electric Code fuses. When mounted on a panel the single-throw switch is fusible at the bottom.

NOTE: Standard fusible switches for Class "H" or "RK-5" fuses.

SINGLE-THROW

Ampere Rating	One Pole			Two Pole			Three Pole			Four Pole						
	Type	Weight	Drawing	Type	Weight	Drawing	Type	Weight	Drawing	Type	Weight	Drawing				
250 VOLT DC & 480 VOLT AC																
*30	D-8111	3/4	Refer to Section E Figure 20	D-8121	1	Refer to Section E Figure 20	D-8131	1 1/4	Refer to Section E Figure 20	D-8141	2	Refer to Section E Figure 20				
+30	D-8411	3/4		D-8421	1		D-8431	1 1/2		D-8441	2					
*60	D-8112	1		D-8122	1 3/4		D-8132	2 1/2		D-8142	3 1/2					
+60	D-8412	1		D-8422	1 3/4		D-8432	2 1/2		D-8442	3 1/4					
100	D-8113	2		D-8123	3 1/4		D-8133	5 1/4		D-8143	7					
200	D-8114	4		D-8124	6 1/4		D-8134	9		D-8144	13					
400	D-8115	8		D-8125	16		D-8135	22		D-8145	31					
600	D-8116	12		D-8126	24		D-8136	39		D-8146	52					
600 VOLT DC & AC																
30	D-8914	1 1/2		Refer to Section E Figure 20	D-8924		2 1/2	Refer to Section E Figure 20		D-8934	4 1/2		Refer to Section E Figure 20	D-8944	6	Refer to Section E Figure 20
60	D-8915	1 3/4			D-8925		3			D-8935	5 1/2			D-8945	7 1/2	
100	D-8916	3 1/2			D-8926		5			D-8936	8			D-8946	11	
200	D-8917	6	D-8927		9	D-8937	14		D-8947	19						
400	D-8918	10	D-8928		20	D-8938	30		D-8948	40						
600	D-8919	15	D-8929		30	D-8939	48		D-8949	64						

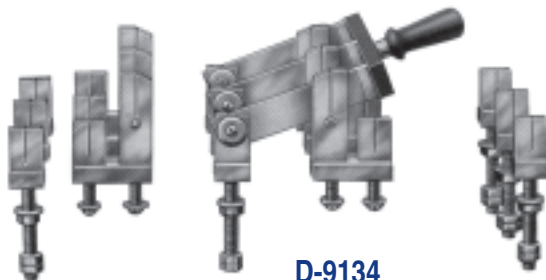
* For 250 Volt DC & AC
+ For 480 Volt AC

Prices for 600 Volt switches include quick break blades as required by U.L. on all switches over 100 Amperes.

FOR MODIFICATIONS AND SPECIAL FEATURES REFER TO SECTION D-7 OF PRICE LIST

Receive Quotes Online

TYPE D BACK-CONNECTED KNIFE SWITCHES Double-Throw, Fusible



D-9134

200 Ampere, Three-Pole, Double-Throw Fusible Switch, Both Throws

Fusible Double Throw Type D knife switches are fusible on both throws. In order to provide clearance between the handle and the fuses, these switches are constructed with low hinges and high clips, as shown in the image to the left.

DOUBLE-THROW

Ampere Rating	One Pole			Two Pole			Three Pole			Four Pole		
	Type	Weight	Drawing	Type	Weight	Drawing	Type	Weight	Drawing	Type	Weight	Drawing
250 VOLT DC & 480 VOLT AC												
*30	D-9111	1 1/4	Refer to Section E Figure 20	D-9121	1 1/2	Refer to Section E Figure 20	D-9131	2 1/2	Refer to Section E Figure 20	D-9141	4	Refer to Section E Figure 20
+30	D-9411	1 1/4		D-9421	1 1/2		D-9431	2 1/4		D-9441	3 3/4	
*60	D-9112	1 3/4		D-9122	3		D-9132	5		D-9142	7	
+60	D-9412	1 3/4		D-9422	3		D-9432	4 3/4		D-9442	6 3/4	
100	D-9113	3		D-9123	5 1/2		D-9133	11		D-9143	14	
200	D-9114	5 1/2		D-9124	11		D-9134	19		D-9144	26	
400	D-9115	11		D-9125	21		D-9135	43		D-9145	60	
600	D-9116	16		D-9126	34		D-9136	73		D-9146	99	
600 VOLT DC & AC												
30	D-9814	1 1/2	Refer to Section E Figure 20	D-9824	3	Refer to Section E Figure 20	D-9834	5 1/2	Refer to Section E Figure 20	D-9844	6	Refer to Section E Figure 20
60	D-9815	2		D-9825	4		D-9835	7		D-9845	8	
100	D-9816	4		D-9826	7		D-9836	14		D-9846	15	
200	D-9817	6 1/2		D-9827	13		D-9837	22		D-9847	30	
400	D-9818	13		D-9828	25		D-9838	50		D-9848	65	
600	D-9819	20		D-9829	40		D-9839	80		D-9849	110	

* For 250 Volt DC & AC
+ For 480 Volt AC

Prices available upon request.

FOR MODIFICATIONS AND SPECIAL FEATURES REFER TO SECTION D-7 OF PRICE LIST

Receive Quotes Online

TYPE D BACK-CONNECTED KNIFE SWITCHES
Single or Double-Throw, Not Fusible

D-535 P2GE

100 Ampere, Two-Pole, Single-Throw Field Discharge Switch With Padlock Feature, 90 Degree Stop & Spade Handle



Field Discharge Switches

Field discharge switches are used to overcome the high inductive current caused by suddenly opening a generator field. When opening the generator circuit, the field discharge switch closes the field across a resistor allowing the inductive discharge to die out gradually, which might otherwise result in a rupture of field insulation.

Upon opening these two-pole switches, the discharge blade, which is an offset extension of one of the main blades, makes contact with a high clip. The high clip, which is connected to the resistor, is located between the hinges of the two blades.

Another feature of the switch is each pole is equipped with quick-break blades. The discharge blade and the quick break blades combine to provide a make before break operation. Upon opening the switch, the resistance current is made before the line-to-field circuit is broken, limiting the field discharge voltage. When closing the switch, the discharge blade breaks the resistance current before the main blades make contact.

Prices do not include resistors.

Ampere Rating	Single Throw		Double Throw	
	Type	Weight	Type	Weight
60	D-534	2 1/4	D-578	2 3/4
100	D-535	3 3/4	D-579	4 3/4
200	D-536	6 1/4	D-580	8 1/4

Polarity Reversing Switches

Another version of the Type D switch is the polarity reversing switch. As shown in the image to the right, the switch is two pole, double throw and is equipped with standard blades. The cross connections, used to give the reversing action, are made of copper bus straps mounted on the back of the switch. Connections to the hinges are made on the front with connections to the clips made on the back of the switch.

15 Volts DC Maximum

Ampere Rating	Type	Base Size (HxW)
100	D-2149	15 x 10
200	D-2150	16 x 11 1/4
300	D-2151	19 x 11 1/4
400	D-2152	20 x 12
600	D-2153	22 x 12
800	D-2154	22 x 15
1200	D-2155	24 x 15
1600	D-2156	27 x 20
2000	D-2157	28 x 22



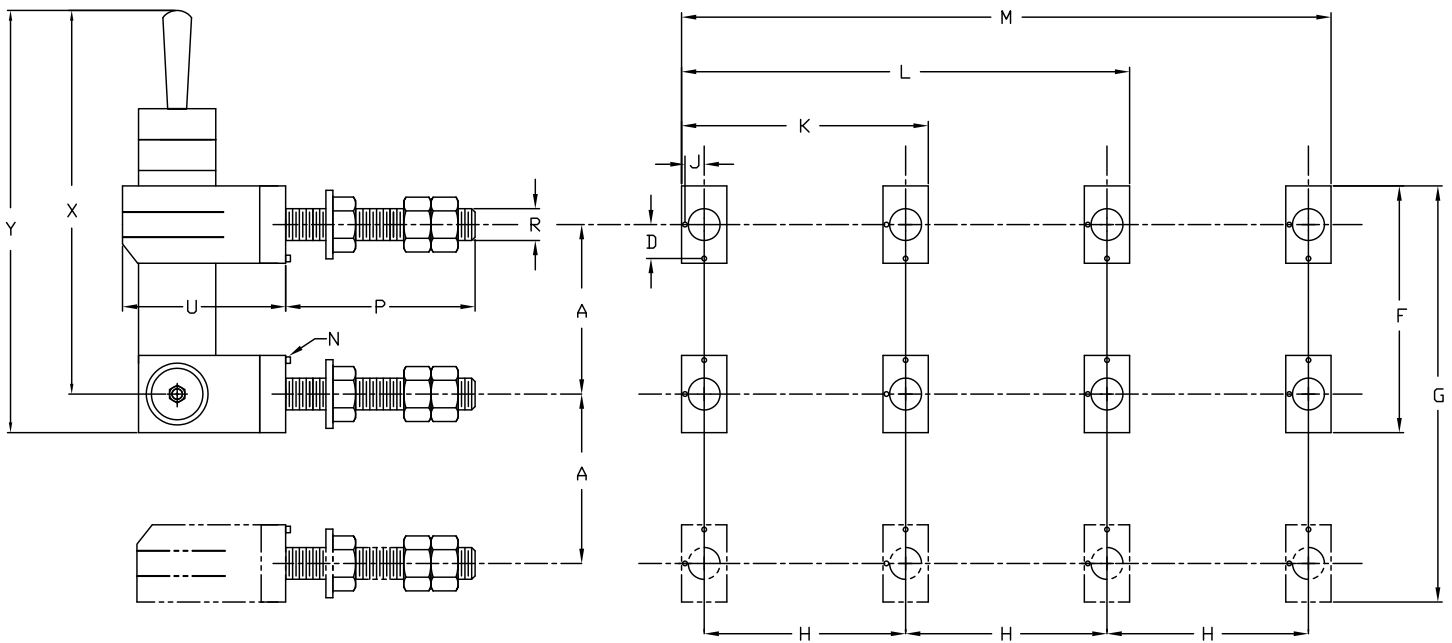
D-2150

200 Ampere, Two-Pole, Polarity Reversing Switch

FOR MODIFICATIONS AND SPECIAL FEATURES REFER TO SECTION D-7 OF PRICE LIST

TYPE D BACK-CONNECTED KNIFE SWITCHES
Single or Double-Throw, Not Fusible

NOT FOR CONSTRUCTION UNLESS ENDORSED



FOR MODIFICATIONS AND SPECIAL FEATURES REFER TO SECTION D-7 OF PRICE LIST

Receive Quotes Online

Filnor, Inc. • 227 N. Freedom • P.O. Box 2328 • Alliance, Ohio 44601 • 330.821.7667 • f-330.829.3175

www.filnor.com • sales@filnor.com • info@filnor.com



KNIFE SWITCHES

TYPE D BACK-CONNECTED KNIFE SWITCHES Single or Double-Throw, Not Fusible

NOT FOR CONSTRUCTION UNLESS ENDORSED

Common to all Voltages

Ampere Rating	D	J	N	P	R	U
*30	3/16	-	1/16	2 13/16	1/4	1 3/8
60	7/32	-	1/16	2 15/16	5/16	1 43/64
100	5/16	-	1/8	3 1/4	3/8	2 1/8
200	7/16	-	1/8	3 5/8	1/2	2 25/32
300	1/2	-	1/8	3 3/4	5/8	3 1/4
400	5/8	-	1/8	3 15/16	3/4	3 11/16
600	3/4	-	1/8	4 3/16	7/8	4 3/8
800	11/16	-	3/16	5	1	3 7/8
1200	7/8	-	3/16	5 1/16	1 1/4	4 7/16
1600	-	1	3/16	7 3/8	1 1/2	4 9/16
2000	-	1/4	3/16	8 3/8	1 3/4	4 7/8

Refer to drawing on page 22.

* 250 Volt DC & AC only

250 VOLT DC 480 VOLT AC

Ampere Rating	A	F	G	H	K	L	M	X				Y			
								1 Pole	2 Pole	3 Pole	4 Pole	1 Pole	2 Pole	3 Pole	4 Pole
*30	2 1/16	2 9/16	4 5/8	2 5/16	2 13/16	5 1/8	7 7/16	4 7/32	4 1/2	4 1/2	5 1/4	4 1/2	4 3/4	4 3/4	5 1/2
60	2 11/16	3 5/16	6	2 7/8	3 3/8	6 1/4	9 1/8	4 7/8	5 5/32	5 5/32	5 15/16	5 3/16	5 1/2	5 1/2	6 1/4
100	2 15/16	3 13/16	6 3/4	3 1/16	3 3/4	6 13/16	9 7/8	6 13/16	7 3/16	7 3/16	6 9/16	7 1/4	7 5/8	7 5/8	7
200	3 9/16	4 13/16	8 3/8	3 7/16	4 5/16	7 3/4	11 3/16	9 3/32	9 17/32	9 17/32	8 1/32	9 3/4	10 3/16	10 3/16	8 11/16
300	3 13/16	5 5/16	9 1/8	3 11/16	4 11/16	8 3/8	12 1/16	9 15/16	9 15/16	9 15/16	8 7/16	10 11/16	10 11/16	10 11/16	9 3/16
400	4 5/16	6 1/16	10 3/8	4 1/16	5 3/16	9 1/4	13 5/16	11	10 7/8	10 7/8	9 7/8	11 7/8	11 3/4	11 3/4	10 3/4
600	4 11/16	6 13/16	11 1/2	4 5/16	5 9/16	9 7/8	14 3/16	11 15/16	11 15/16	11 15/16	10 7/16	13	13	13	11 1/2
800	4 9/16	6 5/16	10 7/8	5 1/16	6 13/16	11 7/8	16 15/16	12	10 15/32	10 15/32	10 1/2	12 7/8	11 3/8	11 3/8	11 3/8
1200	5 1/8	7 1/4	12 3/8	5 1/2	7 1/2	13	18 1/2	12 13/16	11 5/16	11 5/16	11 5/16	13 7/8	12 3/8	12 3/8	12 3/8
1600	5 1/2	7 3/4	13 1/4	5 7/8	8 1/4	14 1/8	20	13 1/4	11 3/4	11 3/4	11 3/4	14 3/8	12 7/8	12 7/8	12 7/8
2000	5 5/8	8	13 5/8	6 5/8	9 3/4	16 3/8	23	14 1/16	12 5/16	12 9/16	12 9/16	15 1/4	13 1/2	13 3/4	13 3/4

* 250 Volt DC & AC only.

600 VOLT DC 480 VOLT AC

Ampere Rating	A	F	G	H	K	L	M	X				Y			
								1 Pole	2 Pole	3 Pole	4 Pole	1 Pole	2 Pole	3 Pole	4 Pole
30	4 3/16	4 13/16	9	4 5/8	5 1/8	9 3/4	14 3/8	6 7/16	6 7/16	7 15/32	7 15/32	6 3/4	6 3/4	7 13/16	7 13/16
60	4 3/16	4 13/16	9	4 5/8	5 1/8	9 3/4	14 3/8	6 7/16	6 7/16	7 15/32	7 15/32	6 3/4	6 3/4	7 13/16	7 13/16
100	4 15/16	5 13/16	10 3/4	5 5/16	6	11 5/16	16 5/8	8 27/32	9 3/16	8 9/16	8 9/16	9 5/16	9 5/8	9	9
200	5 9/16	6 13/16	12 3/8	5 11/16	6 9/16	12 1/4	17 15/16	11 3/32	11 17/32	10 1/32	10 1/32	11 3/4	12 5/32	10 11/16	10 11/16
300	5 9/16	7 1/16	12 5/8	5 11/16	6 11/16	12 3/8	18 1/16	11 11/16	11 11/16	10 3/16	10 3/16	12 7/16	12 7/16	10 15/16	10 15/16
400	6 5/16	8 1/16	14 3/8	5 13/16	6 15/16	12 3/4	18 9/16	12 7/8	12 7/8	11 7/8	11 7/8	13 3/4	13 3/4	12 3/4	12 3/4
600	6 11/16	8 13/16	15 1/2	6 1/16	7 5/16	13 3/8	19 7/16	13 15/16	13 15/16	12 7/16	12 7/16	15	15	13 1/2	13 1/2
800	6 9/16	8 5/16	14 7/8	6 5/8	8 3/8	15	21 5/8	14	12 15/32	13 15/32	12 15/32	14 7/8	13 3/8	14 3/8	13 3/8
1200	7 1/8	9 1/4	16 3/8	7	9	16	23	14 13/16	13 5/16	14 5/16	13 5/16	15 1/4	14 3/8	15 3/8	14 3/8
1600	6 3/4	9	15 3/4	7 3/8	9 3/4	17 1/8	24 1/2	13 1/2	13	14 5/16	13	14 5/8	14 1/8	15 7/16	14 1/8
2000	7 5/8	10	17 5/8	8	11 1/8	19 1/8	27 1/8	14 13/16	14 9/16	15 5/8	14 9/16	16	15 3/4	16 13/16	15 3/4

NOTE: For 30 Ampere 480 Volt AC use 60 Ampere switch.

FOR MODIFICATIONS AND SPECIAL FEATURES REFER TO SECTION D-7 OF PRICE LIST

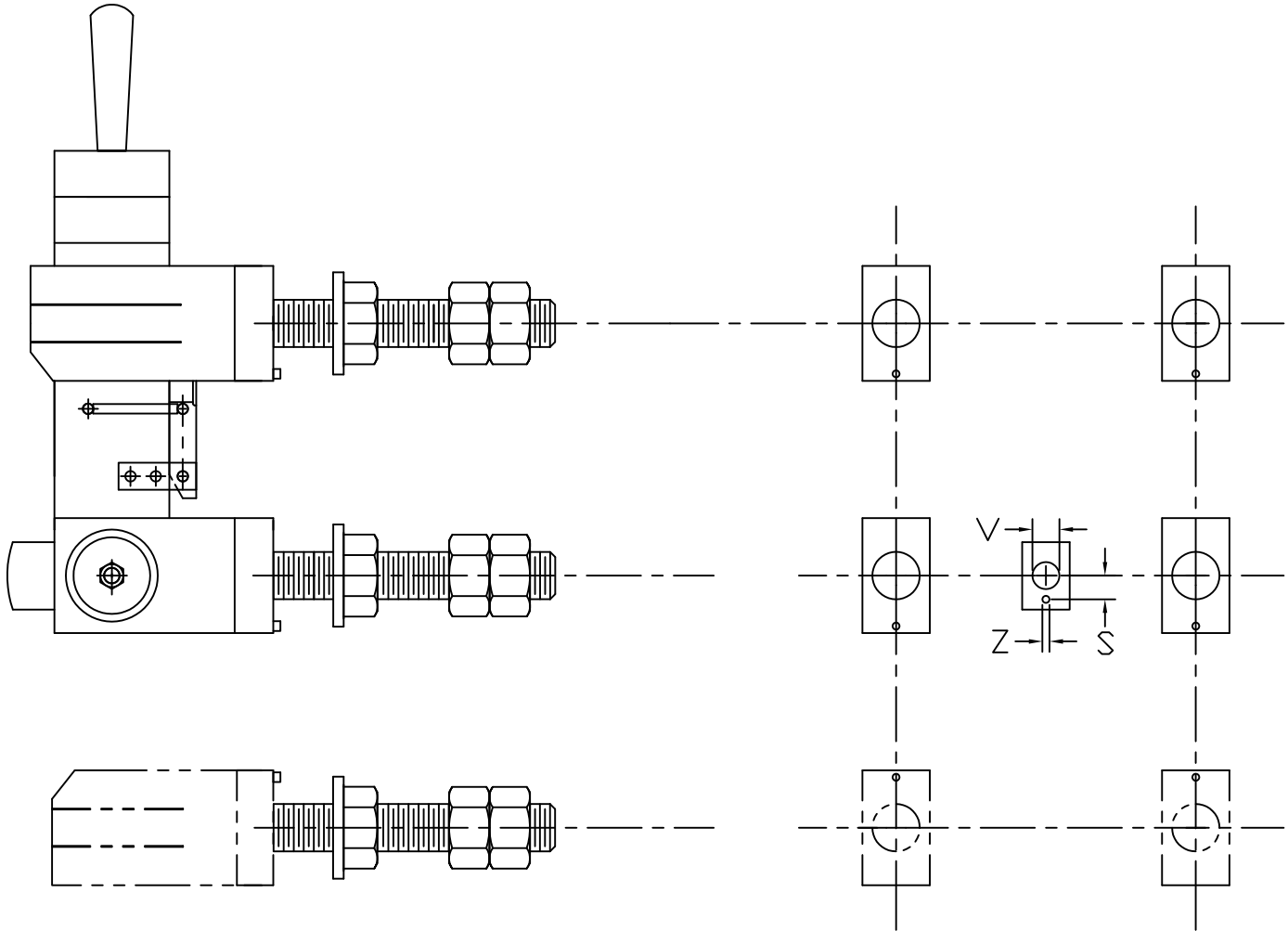
Receive Quotes Online

Filnor, Inc. • 227 N. Freedom • P.O. Box 2328 • Alliance, Ohio 44601 • 330.821.7667 • f-330.829.3175

www.filnor.com • sales@filnor.com • info@filnor.com

TYPE D BACK-CONNECTED KNIFE SWITCHES
Single or Double-Throw, Field Discharge, Not Fusible

NOT FOR CONSTRUCTION UNLESS ENDORSED



TYPE D FIELD DISCHARGE SWITCHES

Dimensions	60	100	200	300	400	600
S	7/32	7/32	5/16	5/16	7/16	7/16
V	5/16	5/16	3/8	3/8	1/2	1/2
Z	1/16	1/16	1/8	1/8	1/8	1/8

FOR MODIFICATIONS AND SPECIAL FEATURES REFER TO SECTION D-7 OF PRICE LIST

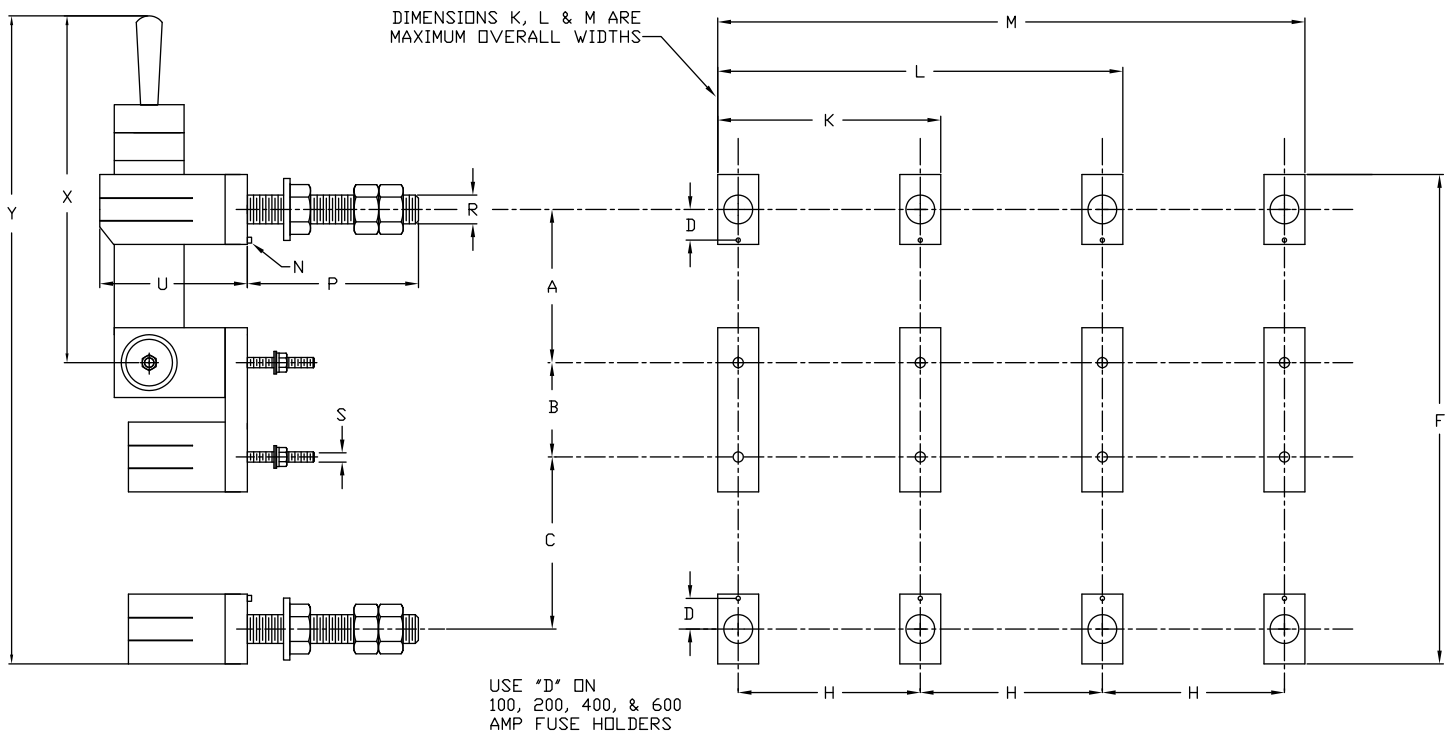
Receive Quotes Online

Filnor, Inc. • 227 N. Freedom • P.O. Box 2328 • Alliance, Ohio 44601 • 330.821.7667 • f-330.829.3175

www.filnor.com • sales@filnor.com • info@filnor.com

TYPE D BACK-CONNECTED KNIFE SWITCHES
Single-Throw, Fusible at Bottom

NOT FOR CONSTRUCTION UNLESS ENDORSED



FOR MODIFICATIONS AND SPECIAL FEATURES REFER TO SECTION D-7 OF PRICE LIST

Receive Quotes Online

Filnor, Inc. • 227 N. Freedom • P.O. Box 2328 • Alliance, Ohio 44601 • 330.821.7667 • f-330.829.3175

www.filnor.com • sales@filnor.com • info@filnor.com



TYPE D BACK-CONNECTED KNIFE SWITCHES
Single-Throw, Fusible at Bottom

NOT FOR CONSTRUCTION UNLESS ENDORSED

Common to all Voltages

Ampere Rating	D	N	P	R	S	U
*30	3/16	1/16	2 13/16	1/4	.163	1 3/8
+30	7/32	1/16	2 15/16	5/16	.190	1 43/64
60	7/32	1/16	2 15/16	5/16	.190	1 43/64
100	5/16	1/8	3 1/4	3/8	.190	2 1/8
200	7/16	1/8	3 5/8	1/2	5/16	2 25/32
400	5/8	1/8	3 15/16	3/4	5/16	3 11/16
600	3/4	1/8	4 3/16	7/8	5/16	4 3/8

Refer to drawing on page 25.

* 250 Volt
 + 480 & 600 Volt

250 VOLT DC & AC

Ampere Rating	A	B	C	F	H	K	L	M	X				Y			
									1 Pole	2 Pole	3 Pole	4 Pole	1 Pole	2 Pole	3 Pole	4 Pole
30	2 1/16	11/16	1 1/2	4 3/4	2 5/16	3	5 5/16	7 5/8	4 7/32	4 1/2	4 1/2	5 1/4	6 11/16	7	7	7 11/16
60	2 11/16	13/16	2 3/8	6 1/2	2 7/8	3 11/16	6 9/16	9 7/16	4 7/8	5 5/32	5 5/32	5 15/16	8 3/8	8 11/16	8 11/16	9 7/16
100	2 15/16	1 9/32	4 7/8	9 13/32	3 1/16	3 3/4	6 13/16	9 7/8	6 13/16	7 3/16	7 3/16	6 9/16	13 3/8	13 3/4	13 3/4	13 1/8
200	3 9/16	1 21/32	5 3/4	12 7/32	3 7/16	4 5/16	7 3/4	11 3/16	9 3/32	9 17/32	9 17/32	8 1/32	17 1/8	17 9/16	17 9/16	16 1/16
400	4 5/16	2 5/16	6 3/4	15 1/8	4 1/16	5 3/16	9 1/4	13 5/16	11	10 7/8	10 7/8	9 7/8	21	20 7/8	20 7/8	19 7/8
600	4 11/16	2 7/8	8 1/8	17 13/16	4 5/16	5 9/16	9 7/8	14 3/16	11 15/16	11 15/16	11 15/16	10 7/16	24	24	24	22 1/2

480 VOLT AC

Ampere Rating	A	B	C	F	H	K	L	M	X				Y			
									1 Pole	2 Pole	3 Pole	4 Pole	1 Pole	2 Pole	3 Pole	4 Pole
30	2 11/16	13/16	4 3/8	8 1/2	2 7/8	3 11/16	6 9/16	9 7/16	4 7/8	5 5/32	5 5/32	5 15/16	10 3/8	10 11/16	10 11/16	11 7/16
60	2 11/16	13/16	4 7/8	9	2 7/8	4	6 7/8	9 3/4	4 7/8	5 5/32	5 5/32	5 15/16	10 7/8	11 5/32	11 5/32	12
100	2 15/16	1 9/32	6 7/8	11 31/32	3 1/16	3 3/4	6 13/16	9 7/8	6 13/16	7 3/16	7 3/16	6 9/16	15 3/8	15 3/4	15 3/4	15 1/8
200	3 9/16	1 21/32	8 1/4	14 23/32	3 7/16	4 5/16	7 3/4	11 3/16	9 3/32	9 17/32	9 17/32	8 1/32	19 5/8	20 1/16	20 1/16	18 9/16
400	4 5/16	2 5/16	9 3/4	18 1/8	4 1/16	5 3/16	9 1/4	13 5/16	11	10 7/8	10 7/8	9 7/8	24	23 7/8	23 7/8	22 7/8
600	4 11/16	2 7/8	11 1/8	20 13/16	4 5/16	5 9/16	9 7/8	14 3/16	11 15/16	11 15/16	11 15/16	10 7/16	27	27	27	25 1/2

600 VOLT DC & AC

Ampere Rating	A	B	C	F	H	K	L	M	X				Y			
									1 Pole	2 Pole	3 Pole	4 Pole	1 Pole	2 Pole	3 Pole	4 Pole
30	4 3/16	13/16	4 3/8	10	4 5/8	5 7/16	10 1/16	4 11/16	6 7/16	6 7/16	7 15/32	7 15/32	11 15/16	11 15/16	13	13
60	4 3/16	13/16	4 7/8	10 1/2	4 5/8	5 3/4	10 3/8	15	6 7/16	6 7/16	7 15/32	7 15/32	12 7/16	12 7/16	13 1/2	13 1/2
100	4 15/16	1 9/32	6 7/8	13 31/32	5 5/16	6	11 5/16	16 5/8	8 27/32	9 3/16	8 9/16	8 9/16	17 3/8	17 3/4	17 1/8	17 1/8
200	5 9/16	1 21/32	8 1/4	16 23/32	5 11/16	6 9/16	12 1/4	17 15/16	11 3/32	11 17/32	10 1/32	10 1/32	21 5/8	22 1/16	20 9/16	20 9/16
400	6 5/16	2 5/16	9 3/4	20 1/8	5 13/16	6 15/16	12 3/4	8 9/16	12 7/8	12 7/8	11 7/8	11 7/8	25 13/16	25 13/16	24 13/16	24 13/16
600	6 11/16	2 7/8	11 1/8	22 13/16	6 1/16	7 5/16	13 3/8	19 7/16	13 15/16	13 15/16	12 7/16	12 7/16	29	29	27 1/2	27 1/2

NOTE: For dimensions of Double-Throw Fusible switches contact the factory.

FOR MODIFICATIONS AND SPECIAL FEATURES REFER TO SECTION D-7 OF PRICE LIST

Receive Quotes Online

Filnor, Inc. • 227 N. Freedom • P.O. Box 2328 • Alliance, Ohio 44601 • 330.821.7667 • f-330.829.3175

www.filnor.com • sales@filnor.com • info@filnor.com



Other Filnor Switch Products Available

Type BM Open Style Front Connected

Bolted Pressure Contact Switches

Type EBM Switches

Enclosed Bolted Pressure Switch with side operated manual handle, non-load break.

Type BPI Switches

Enclosed Bolted Pressure Switch with side operated Quick Brake Mechanism and Arc Breaking capability.

Type DB Switches

High Current Switch applications.

Medium Voltage Switches

Isolation and grounding applications. 200 - 12,000 Ampere, 5 kV - 38 kV.

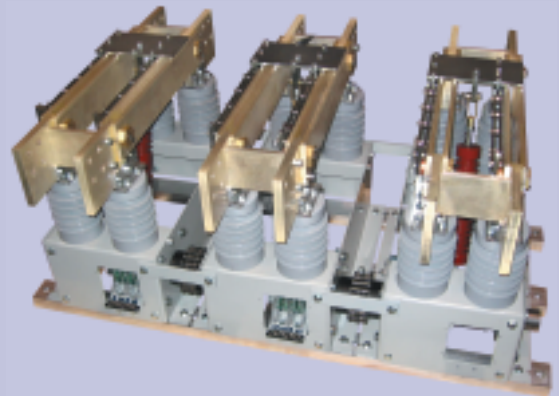
Custom Designed Switches

Switches designed to suit your exact specifications.

Transfer Switches

Open or enclosed.

Please contact Filnor, Inc. for complete information on the above products, as well as additional Resistor and Control Units not listed.



Special Design Medium Voltage Switch

6300 A, 15 kV, 3-Pole, Single Throw, Motor Operated, Medium Voltage Bolted Pressure Switch



3000 A, 250 V DC, 2-Pole, Single Throw, Fusible, Type BPI Switch Crane Rail Disconnect





Knife Switch Product Catalog

Filnor, Inc.
227 North Freedom
P.O. Box 2328
Alliance, Ohio 44601
P-330.821.7667
F-330.829.3175
info@filnor.com

Please visit our website at www.filnor.com for more information on all of our product lines.



30 Ampere - 6000 Ampere Standard
Higher Ampere available upon request
125 Volt - 600 Volt Standard
Higher Voltages available upon request

Knife Switches