



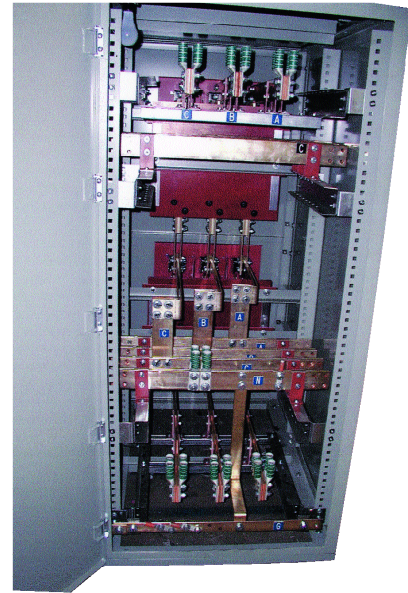
Switchboards AC & DC

Specifications

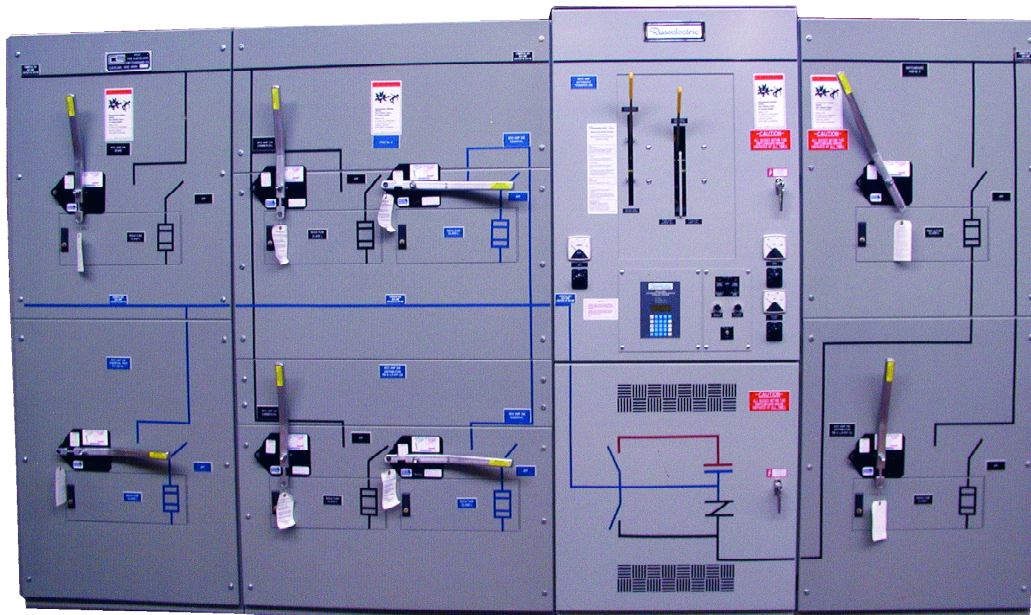
SWITCH-005-1

P.O. Box 2328 • 227 N. Freedom Ave. • Alliance, OH 44601 • Phone: (330) 821-7667 • Fax: (330) 829-3175 • Website: www.filnor.com • Email: filnor@filnor.com

Filnor switchboards shall consist of the required number of individual sections bolted together to form a rigid structure. Each section shall consist of die formed 10 gauge uprights which are reinforced front to back with heavy duty gussets. The enclosure is free standing. All steel surfaces shall be properly cleaned and have a finished coat of ASA 61 gray or per customer requirement. In addition, the front, sides, rear, and top of each switchboard section will have a DANGER label in accordance with NEMA Standard PB-2. The entire switchboard shall have a channel base. Bottom to be open with bottom closure plates available upon request. The switchboard shall be furnished with adequate means for lifting. The switchboard shall be constructed in accordance with the latest NEMA PB-2 and UL 891 standards.



*rear view of
switchboard assembly*



Emergency generator switchboard to switch from utility power to standby power and back to utility.



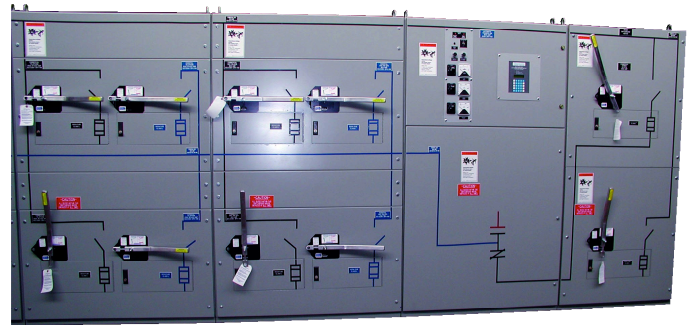
Switchboards AC & DC

Specifications

SWITCH-005-1

P.O. Box 2328 • 227 N. Freedom Ave. • Alliance, OH 44601 • Phone: (330) 821-7667 • Fax: (330) 829-3175 • Website: www.filnor.com • Email: filnor@filnor.com

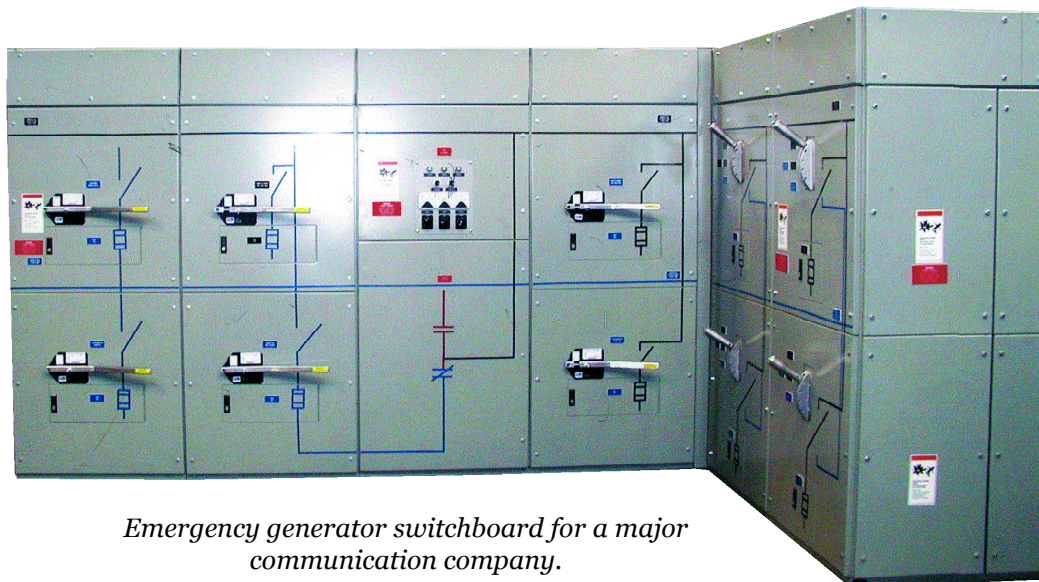
The bus shall be copper rated 1000 amperes per square inch, silver-plated, with bolted joints. Grade 5 bolts will be used at the bus joints. Bus shall be A-B-C, left to right, front to rear and top to bottom when facing the front of the switchboard. The main bus shall be located toward the rear of the switchboard. The bus shall be braced for the required amperes symmetrical and supported to withstand mechanical forces exerted during short circuit conditions when directly connected to a power source having the indicated available short circuit current.



1600A, 480VAC, 3 phase switchboard with automatic transfer switch.

Filnor shall provide a full capacity neutral where a neutral is indicated on the drawings. A copper ground bus shall be furnished the full length of the switchboard and bolted to each section.

Please contact Filnor, Inc. with your requirements.



Emergency generator switchboard for a major communication company.